

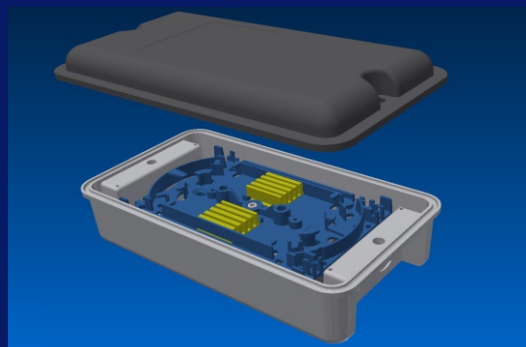
# ComNet

Producing of communications & data centers equipment since 1997th

## Coming in 2023th !

### FOS-43

Outdoor enclosure FOS-43 provided for creating small capacity outdoor networks. There can be installed one splicing cassette FOS-41NG, so up to 16 junctions can be made. This enclosure has four ports for PG9 cable inlets. Thanks to rubber o-ring, this enclosure meets to IP67 protection class. Optional stainless steel pole bracket available.



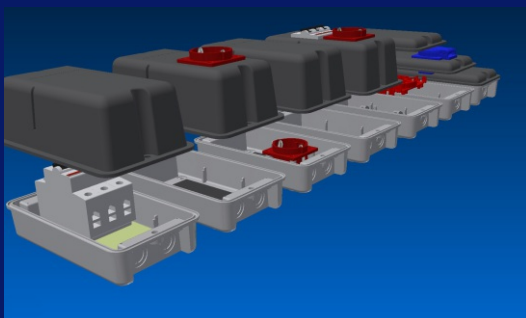
### FOS-44

FOS-44 is outdoor fiber optic enclosure with protection class IP67. Unlike FOS-43, there is an internal switchboard for four DuplexSC adapters.



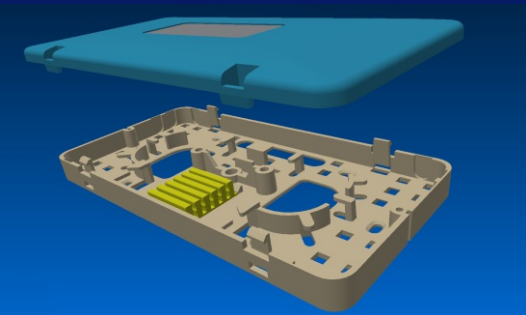
### PS-014

PS-014 opens a wide series of outdoor enclosures for various purposes. This product line will include enclosures for power adapters, electrical mounting, circuit breakers. There will be available fixings on poles too. Protection class up to IP67.



### FOS-38

FOS-38 opens a new series of compact indoor fiber optic enclosures. These enclosures designed for mounting on standard electric cell boxes, like fiber optic socket FOS-17. There will be many accessories in this series, like switchboxes and wall mounted sockets.



# ComNet

Producing of communications & data centers equipment since 1997th

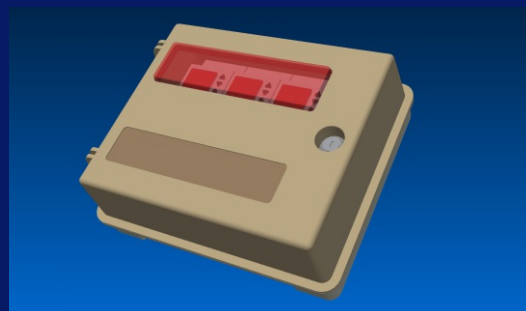
## Coming in 2023th !

### FOS-53

Enclosure FOS-53 created on FOS-55 base and provided for installing electric counters and other information elements.

A large transparent or tinted protective glass ensures the visibility of various information equipment, mounted on DIN rail

Thanks to rubber o-ring, this enclosure meets to IP64 protection class



### PS-20

PS-20 provided for installing electric counters in outdoor conditions. Transparent or tinted protective glass ensures the visibility of various information equipment, mounted on DIN rail  
This enclosure has IP67 protection class



### PS-19

PS-19 provided for small power distribution points, supplied with electric counter and / or circuit breakers. There is 35 mm DIN rail, provided for mounting up to four rail-mounted elements.  
Up to two SHUKO power sockets can be installed on mounting plate inside.



### FOS-27

FOS-27 designed for vertical drop cable systems. Unlike the simplest enclosures FOS-34 and FOS-49, this distribution box is more complicated, consists from two compartments and has a distribution switchboard inside. There can be installed a mounting plate for up to eight SC or DuplexSC adapters.  
This mounting plate can be made especially for Your applications.

