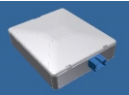




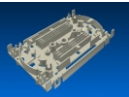

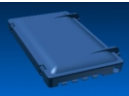
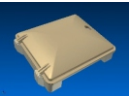



# Build Your FTTH network, using our products

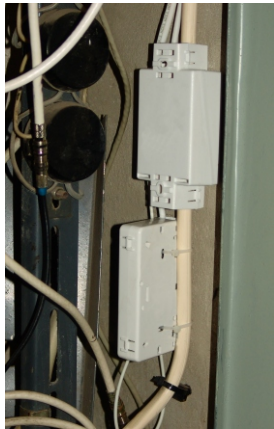
Our product range covers all types of enclosures for fiber network

Product	Description	IP class	Large office building	Small office	Apartment building	Urban cottage	Country cottage	Outdoor networks	Repairing fiber optic networks	Provided for active componens	Designed for fusion splicing	Designed for mechanical conector
 FOS-13 FOS-19	Fiber optic wall mount sockets	IP30	✓	✓	✓	✓	✓				✓	✓
 FOS-16	Fiber optic breakout box for vertical riser cable distribution	IP30			✓							✓
 FOS-18	Mechanical splice protection enclosure with additional cable spool	IP30			✓				✓			✓
 FOS-23	Mechanical splice protection enclosure	IP30	✓	✓	✓	✓			✓		✓	✓
 FOS-28	Outdoor fiber optic enclosure	IP67						✓			✓	
 FOS-41	Splicing cassette for 12 fusions	-	✓	✓	✓	✓	✓	✓	✓		✓	
 FOS-42	Five models of small indoor enclosures for fiber optic fusion	IP40	✓	✓	✓	✓	✓		✓		✓	
 FOS-49	Fiber optic distribution enclosure for vertical riser cable distribution	IP30			✓						✓	
 FOS-54	Universal enclosure for fiber optic, video surveillance, fire & security alarm	IP65	✓	✓	✓	✓	✓	✓		✓	✓	
 FOS-56	Universal small size fiber optic distribution enclosure	IP30	✓	✓	✓	✓	✓	✓			✓	

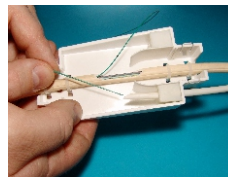
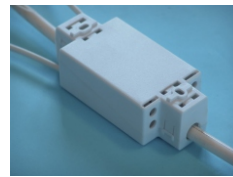
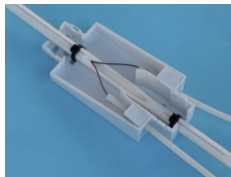
# FTTH installation in apartment building

## Vertical riser cable installation in apartment house using our production

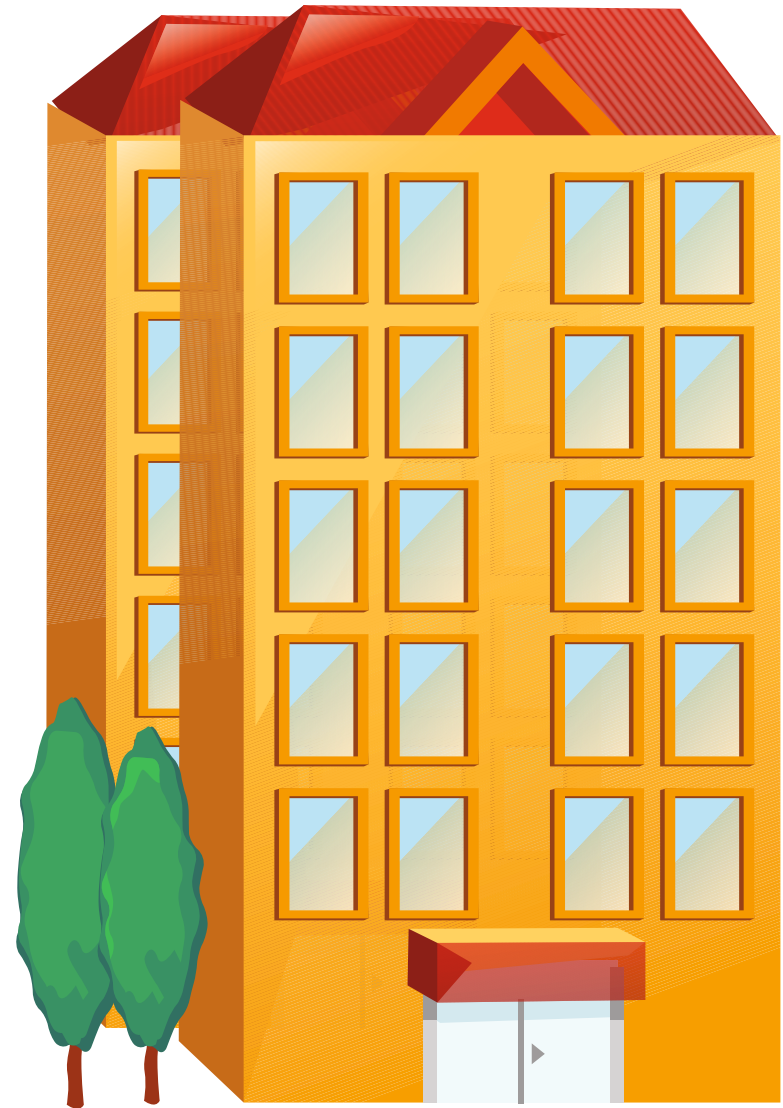
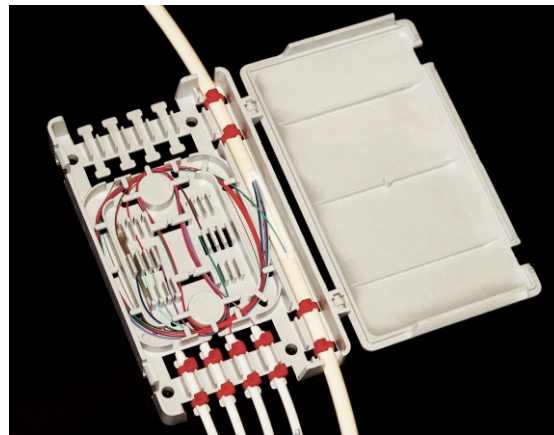
Most popular method to organize FTTH in apartment building is using vertical riser cable. It can be done using fusion splicing or mechanical splice. Both methods are supported by our products.



If you prefer mechanical splicing, FOS-16 & FOS-18 can be your choice. FOS-16 is a fiber optic breakout box, mounted on a riser cable and provided for distributing up to four outgoing fibers. If it is necessary to extend fibers, there can be used a mechanical splice in a protective enclosure FOS-18 or FOS-23 also.



If you prefer fusion splicing, you should choose a distribution box FOS-49. This enclosure is mounted on a vertical riser cable and supports up to eight outgoing connections.

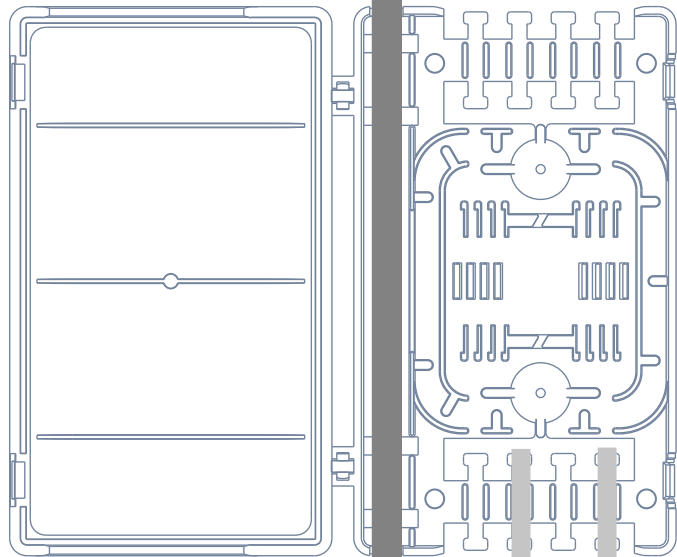


# FTTH installation in apartment building

Two methods for riser cable installation in apartment house using our production

If fusion splices used :

If mechanical splice holders used :

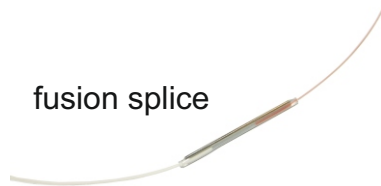


## FOS-49

Fiber-optic breakout box for vertical riser cable distribution with splicing space



fusion splice

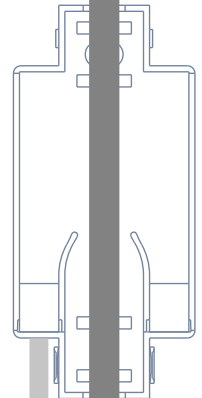


## FOS-16

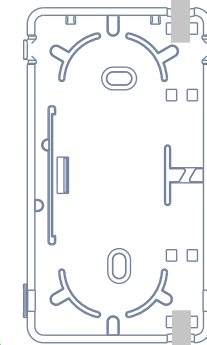
Fiber-optic breakout box for vertical riser cable distribution.

## FOS-18

Mechanical splice protection enclosure with additional cable spool

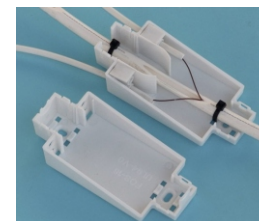
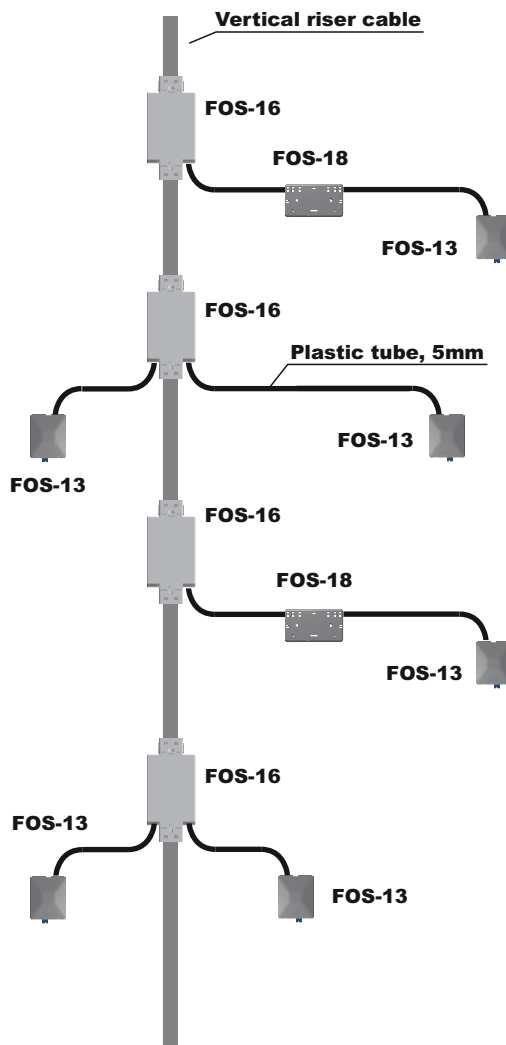
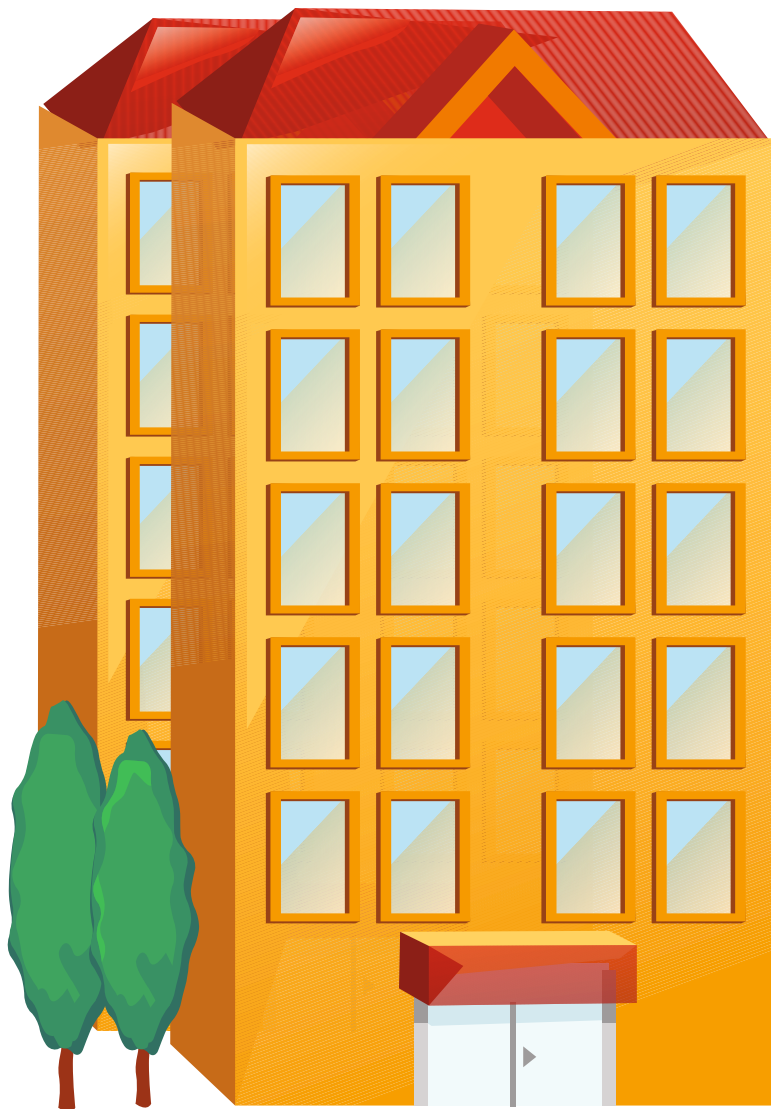


mechanical splice



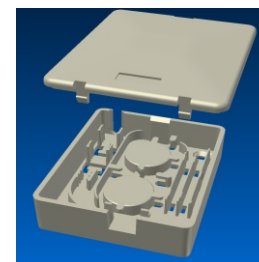
# FTTH installation in apartment building

Vertical riser cable installation in apartment house using mechanical splices



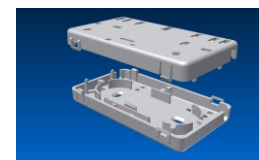
## FOS-16

Fiber-optic breakout box for vertical riser cable distribution.



## FOS-13

Wall-mounting fiber-optic termination box with space for one SC adapter



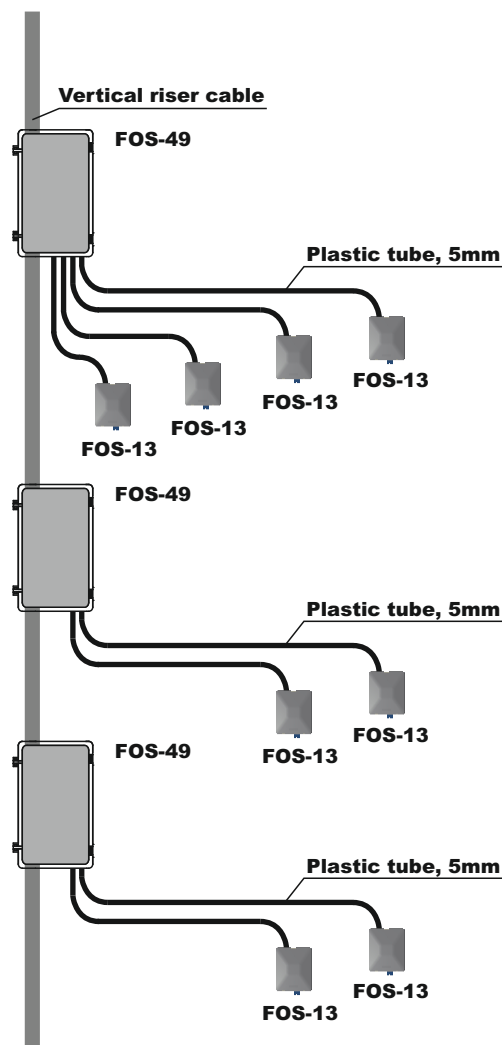
## FOS-18

Mechanical splice protection enclosure with additional cable spool

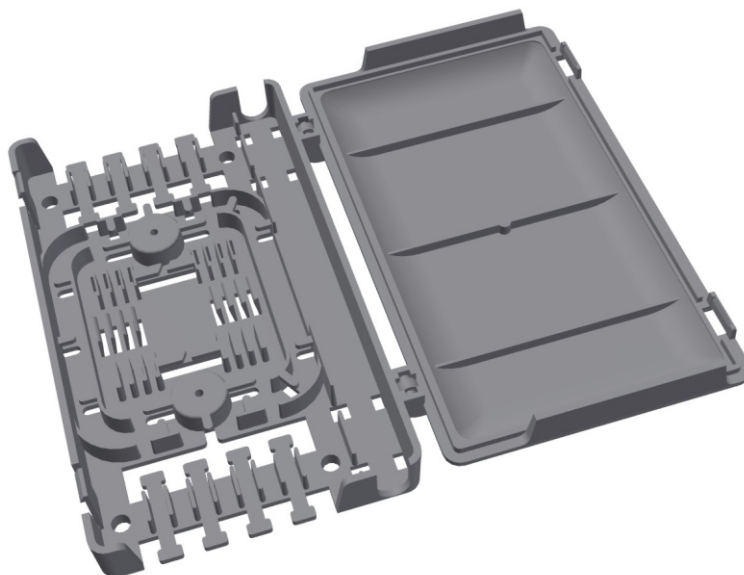


# FTTH installation in apartment building

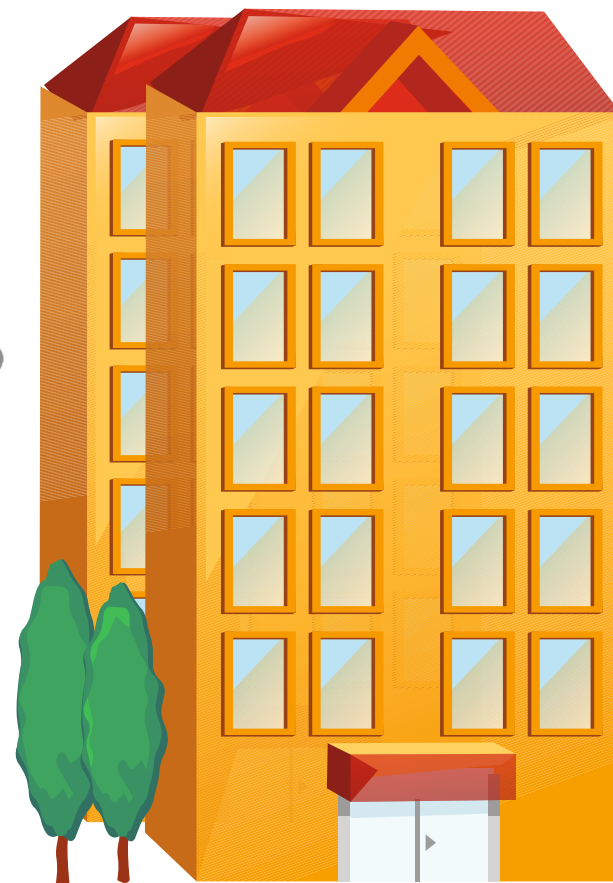
Riser cable installation in apartment house using fusion splicing



## Up to eight branches on each floor

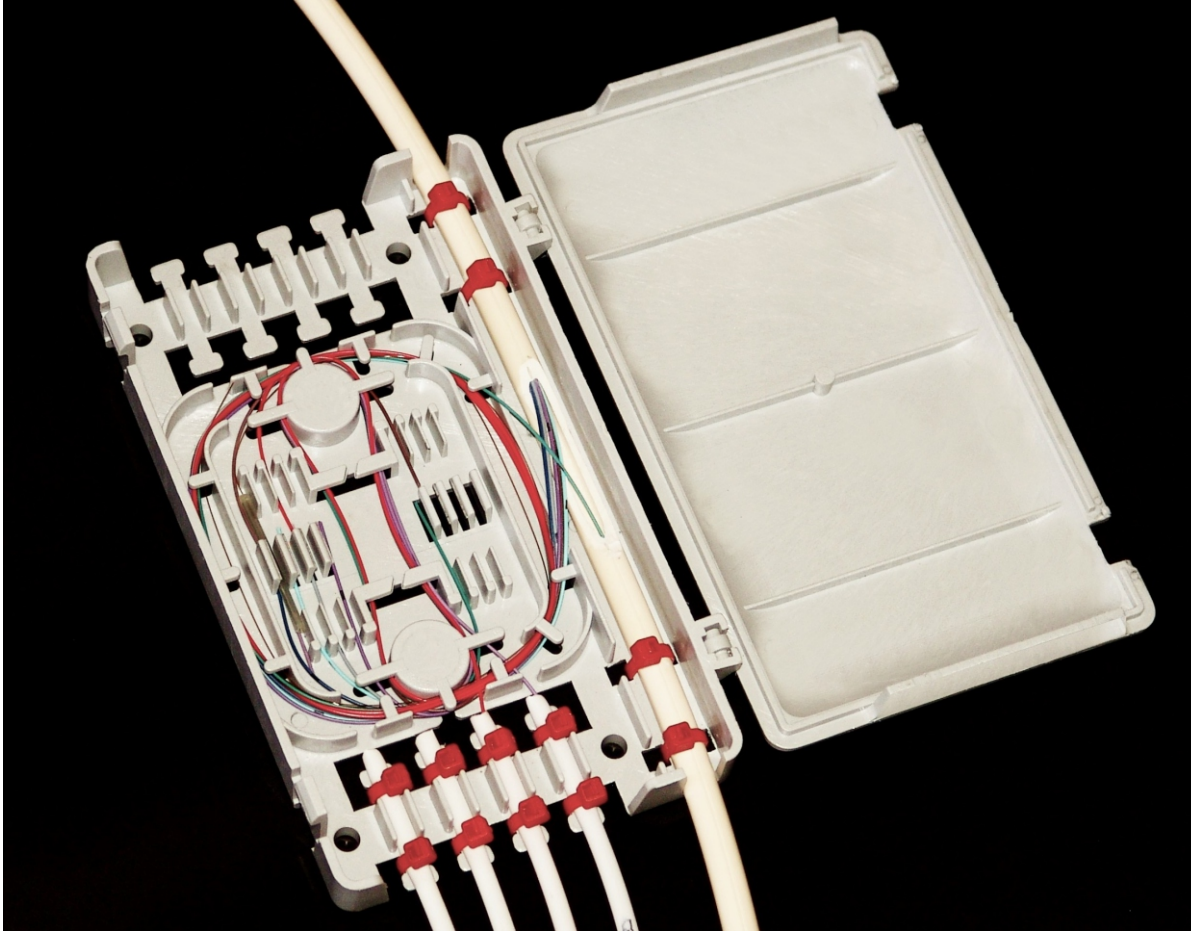


# FOS-49



# FTTH installation in apartment building

Riser cable installation in apartment house using distribution box FOS-49



- Through-going riser cable, up to 14mm
- Up to eight outgoing tubes
- Up to 16 splices
- Cables fixed with plastic strips
- Optional adapter plate
- Compact design
- Attractive price

# FTTH installation in apartment building

Riser cable installation in apartment house using distribution box FOS-49



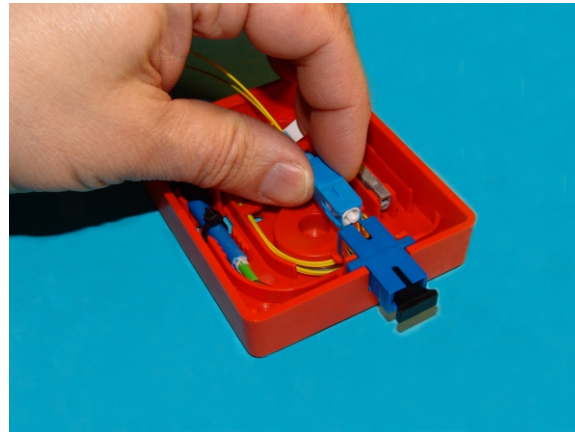
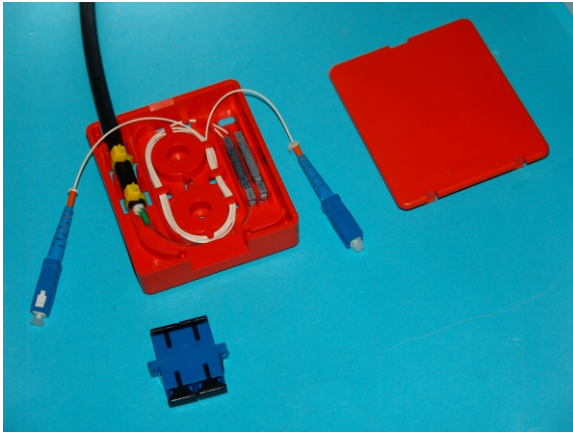
- There is space for additional adapter plate for two Duplex-SC adapters
- If You want quickly connect or disconnect outgoing fibers, use Duplex-SC adapters
- SC or LC adapters can be used

## Optional adapter plate for two Duplex-SC adapters

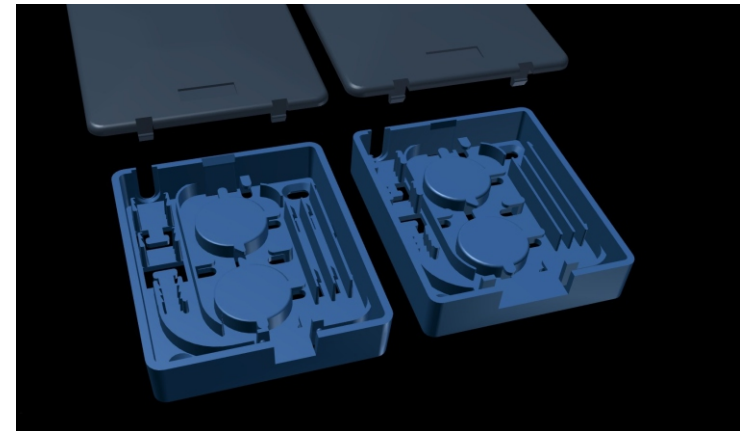
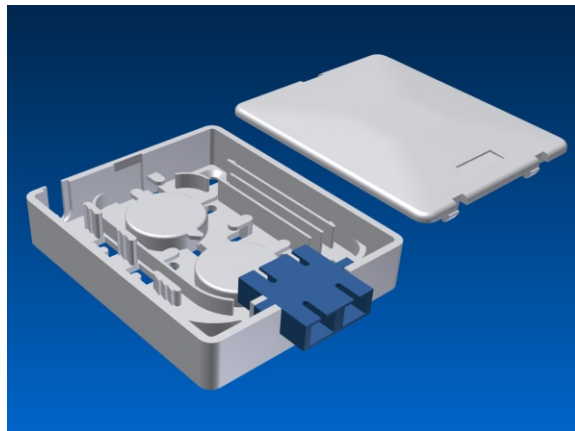
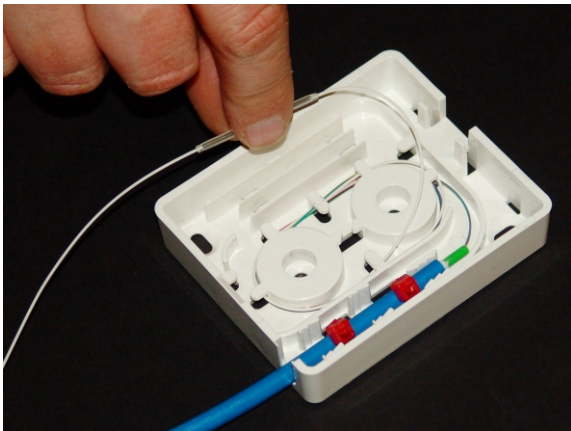


# FTTH installation in apartment building

## Fiber optic wall mount sockets FOS-13 & FOS-19



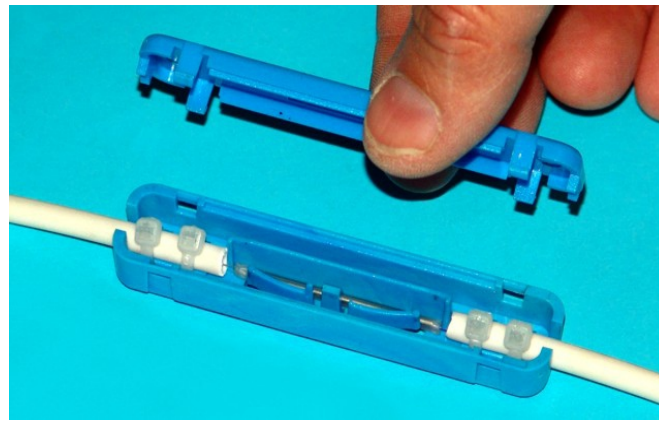
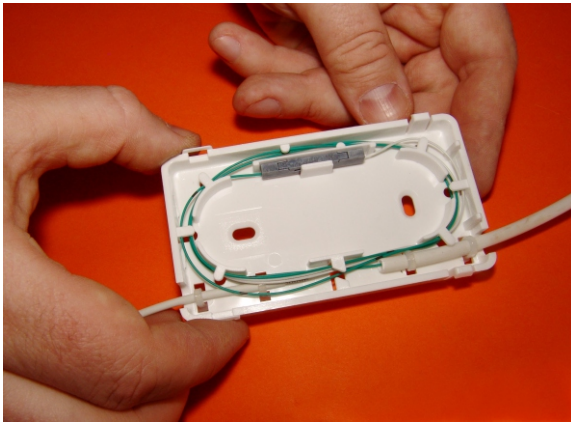
- FOS-13 is wall mount fiber socket for one SC adapter
- FOS-19 is wall mount fiber socket for one Duplex-SC adapter
- FOS-13 & FOS-19 supports both type of splicing - mechanical and fusion



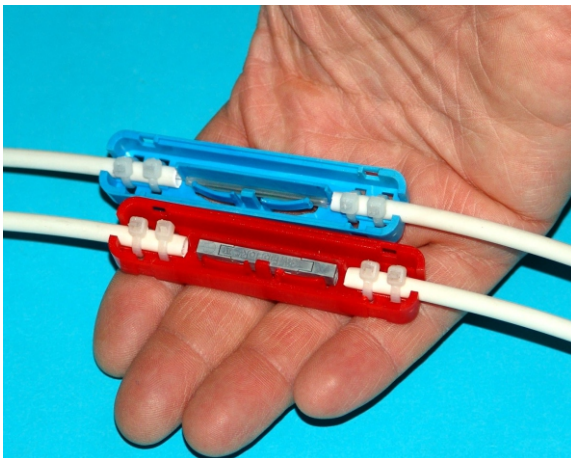


# Extending, repairing and splicing fibers

## Fiber optic splicing enclosures FOS-18 & FOS-23

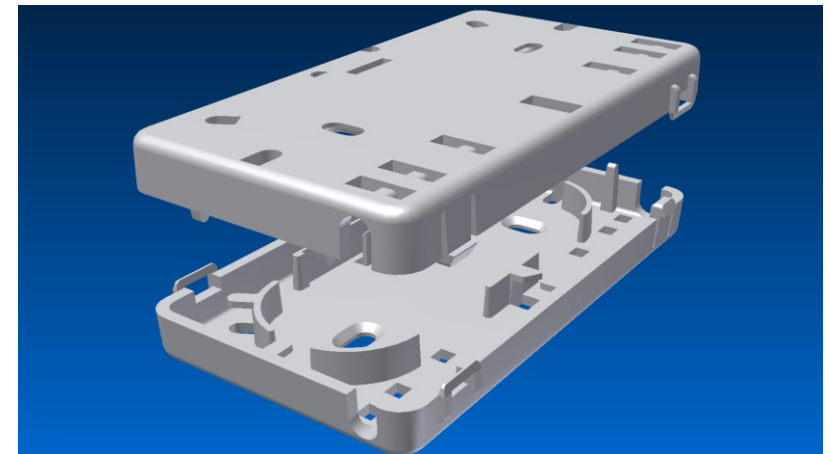


- FOS-18 provided for joining up to two fibers, using mechanical splice. There is cable loop.
- FOS-23 provided for joining one fiber, using mechanical or fusion splice
- Both products can be used to repair broken fibers



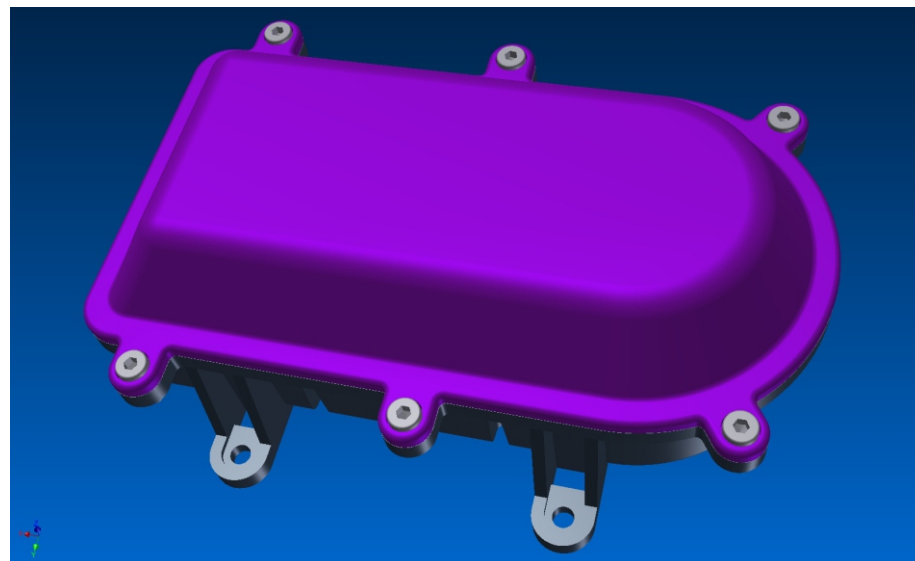
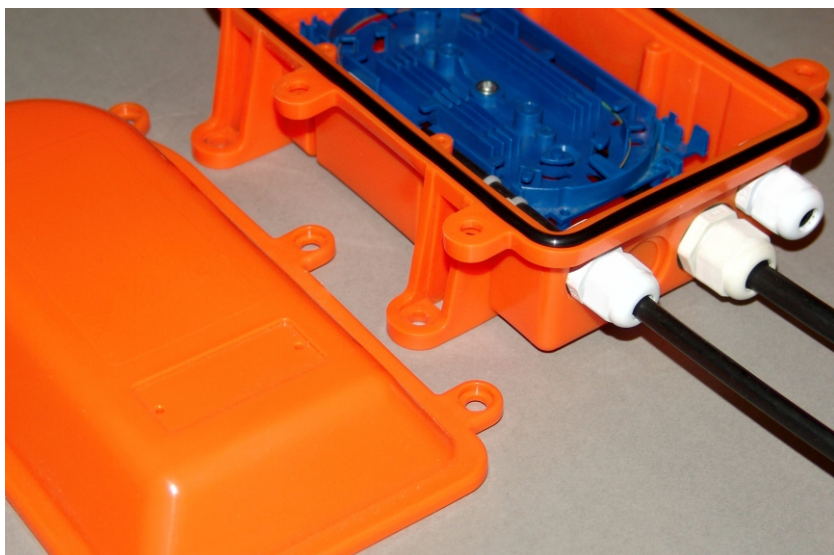
**FOS-23**  
provided for fusion  
or mechanical splice

**FOS-18**  
consists of  
two same parts

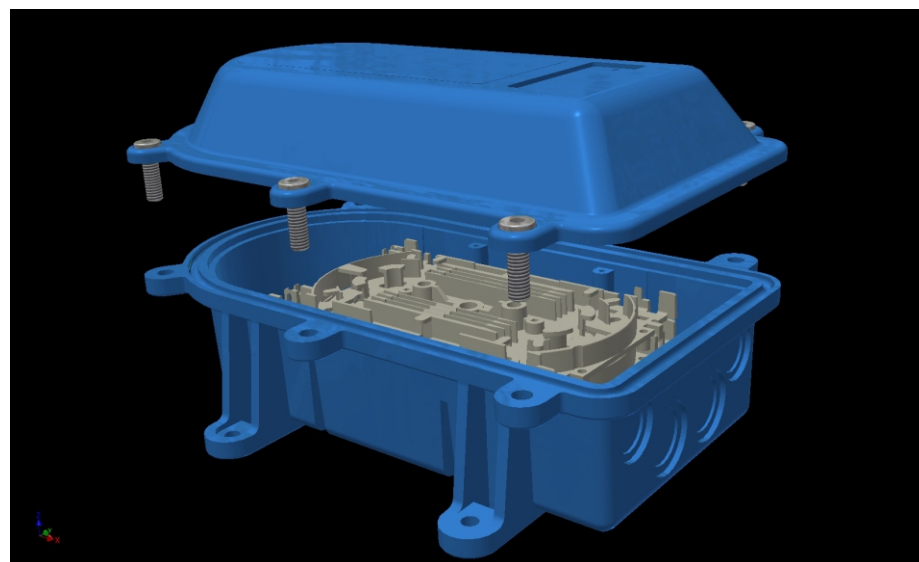


# Outdoor networking for private cottages

## Outdoor splicing enclosure FOS-28



- FOS-28 is IP67 rated outdoor enclosure for small and medium size FTTH networks
- Perfect solution for urban & countryside cottages
- Optional adapter plate inside
- Up to four sealed outputs
- Rubber o-ring and six AISI screws for secure sealing





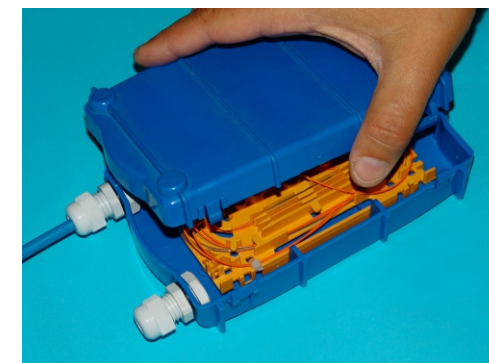
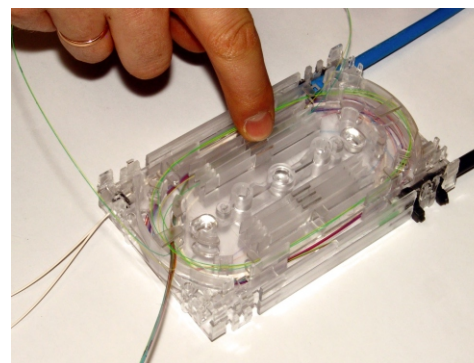
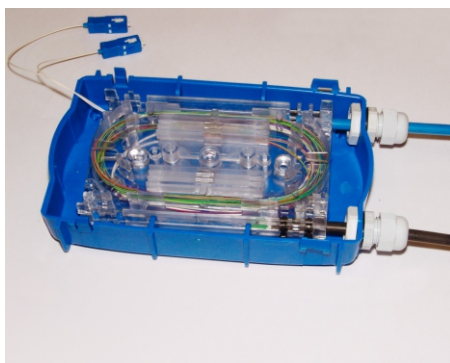
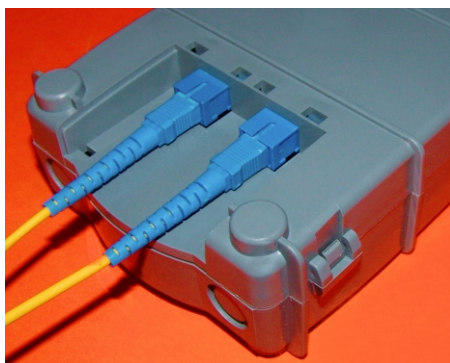
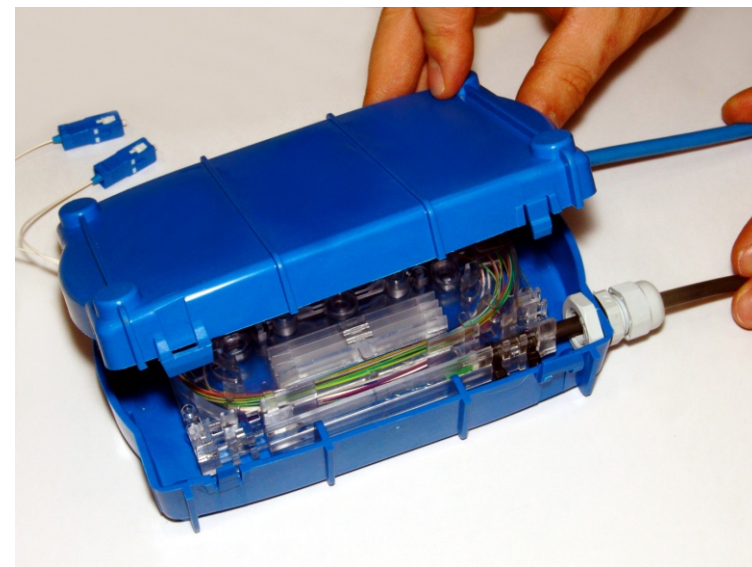
# Fiber optic in small and medium office buildings

## Serie of indoor splicing enclosures FOS-42

Indoor fiber optic enclosures FOS-42 serves as inexpensive solution for creating various networks for office buildings.

Usually, offices occupy one or more floor, so here do not use vertical riser cable, but horizontal cables preferred.

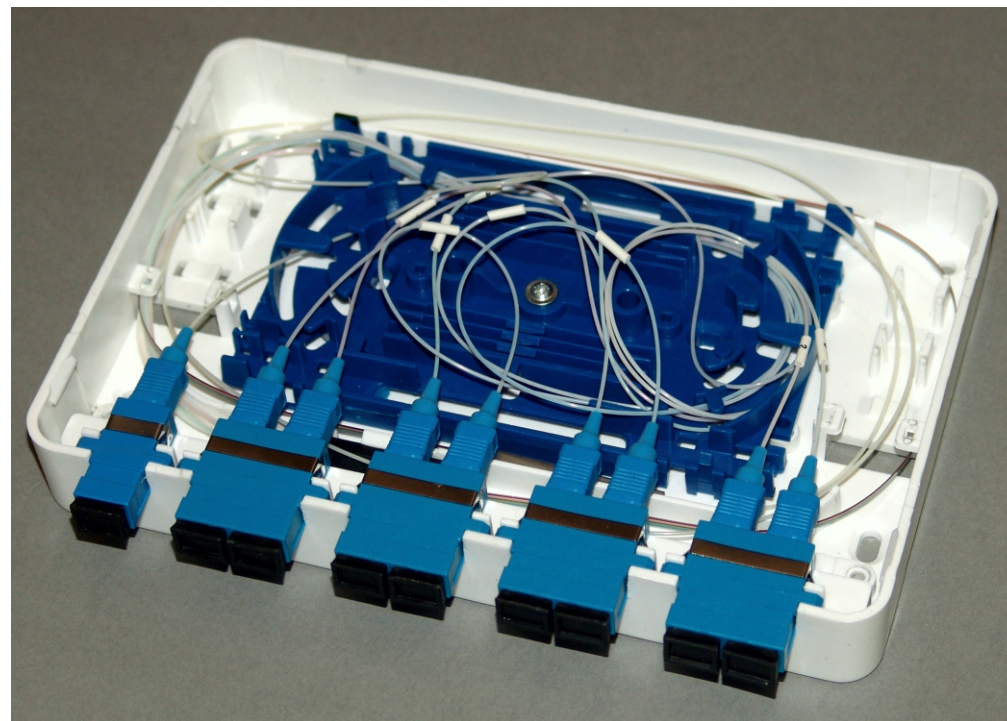
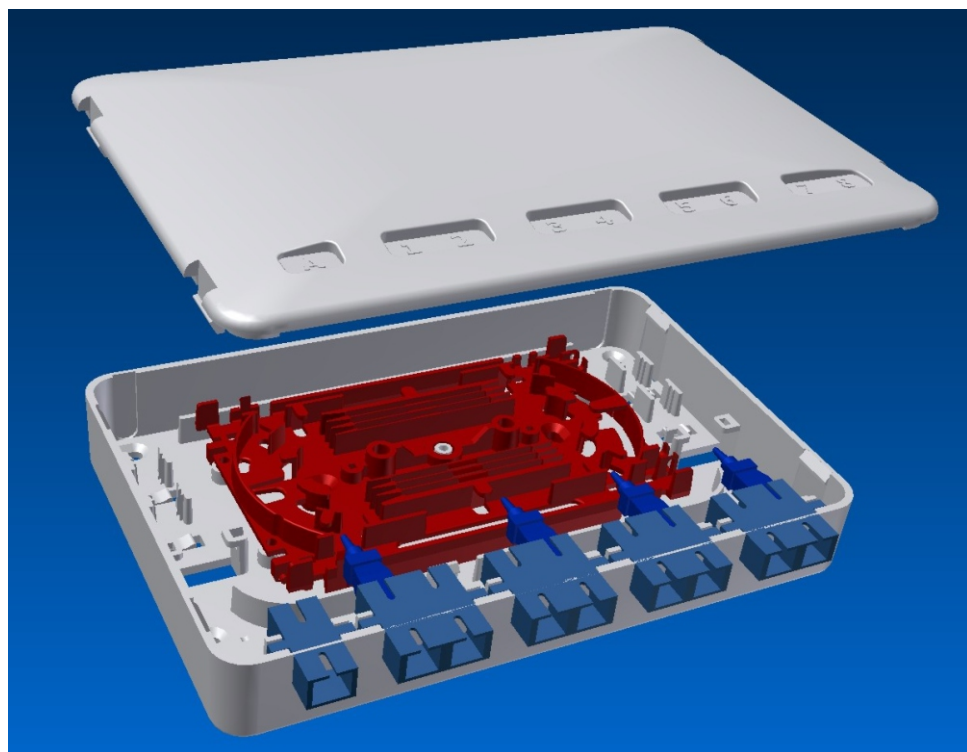
FOS-42 offers five different enclosures for capacity up to 48 splices. Each enclosure has fixings for four outgoing cables. Like other our products, here is splicing cassette FOS-41 used to organize splicings



# Fiber optic in small and medium office buildings

## Universal indoor splicing enclosure FOS-56

This enclosure can be adapted for various fiber optic applications :



- You can use this enclosure just for two fiber cable splicing
- You can use this enclosure to install passive splitter inside
- You can use this enclosure as wall - mount socket for multiple SC adapters

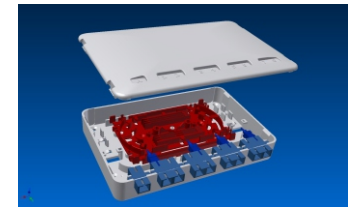
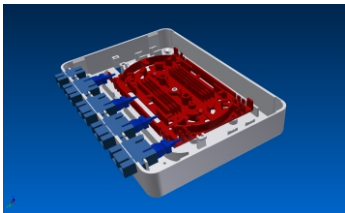
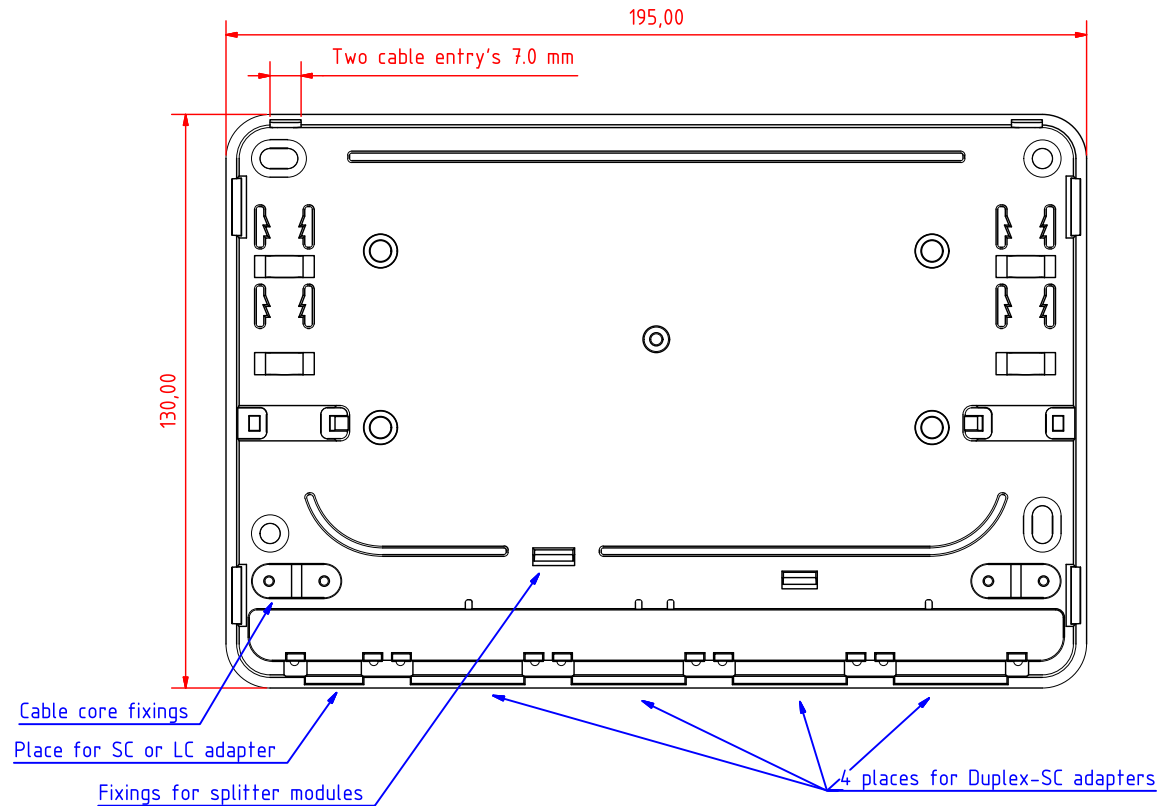


# Fiber optic in small and medium office buildings

## Universal indoor splicing enclosure FOS-56

There can be installed :

- One splicing cassette FOS-41 (12 splices)
- One SC adapter
- Up to four DuplexSC adapters
- One passive splitter

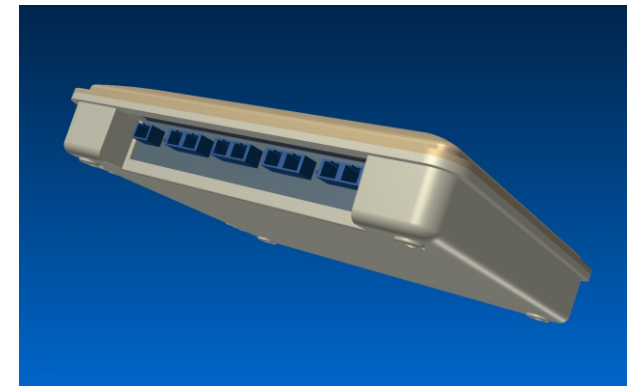
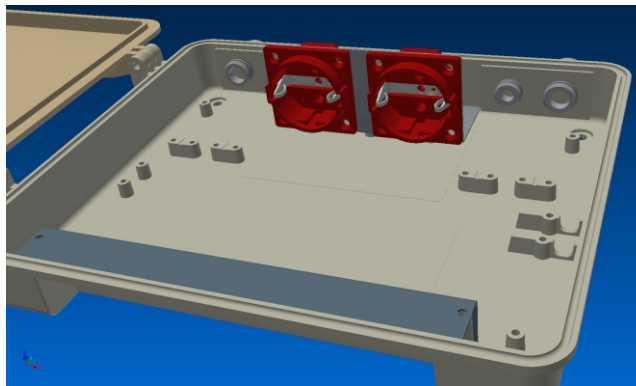
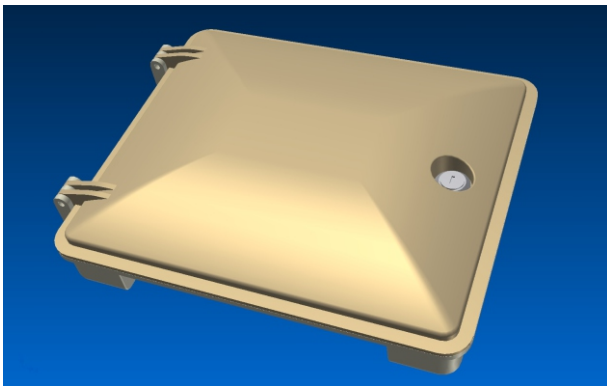
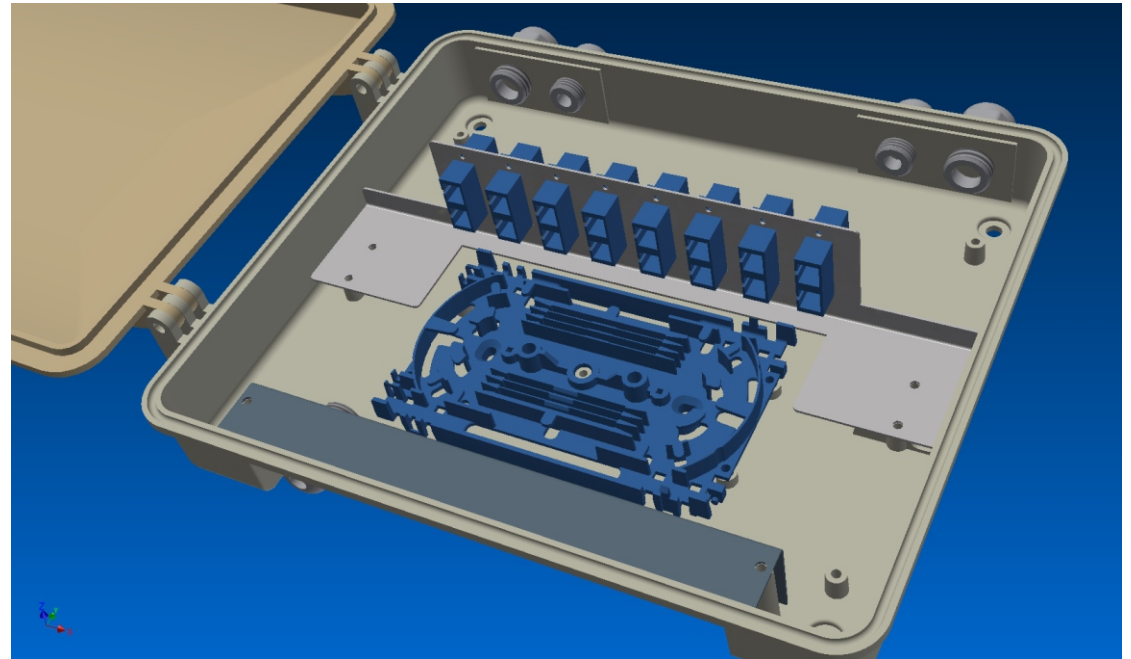


# Enclosure for various passive and active components

## FOS-54 : Highly customizable IP65 sealed enclosure

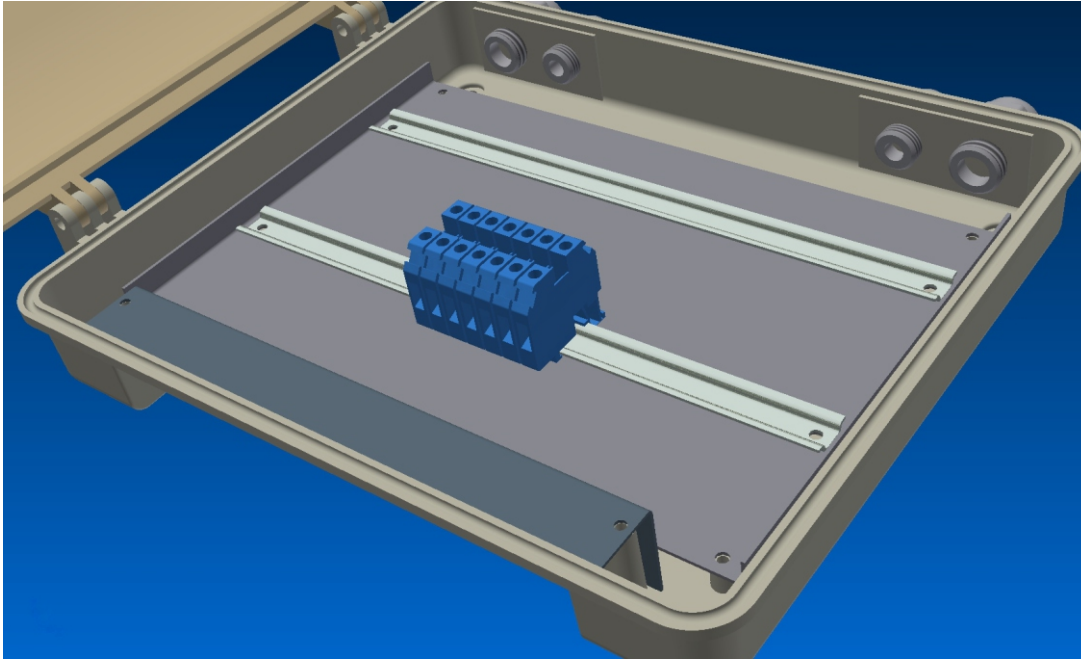
This enclosure can be used for :

- Outdoor or indoor fiber optic splicing (four sealed cable inlets + customizable backplate)
- Installing passive fiber optic splitters
- Installing various active network components (HUB, switches, media converters)
- Fire & security alarm
- Video surveillance
- Industrial automatic, low-voltage electronics (15 & 35 mm DIN rails can be installed)
- Various PSC-mounted electronic devices



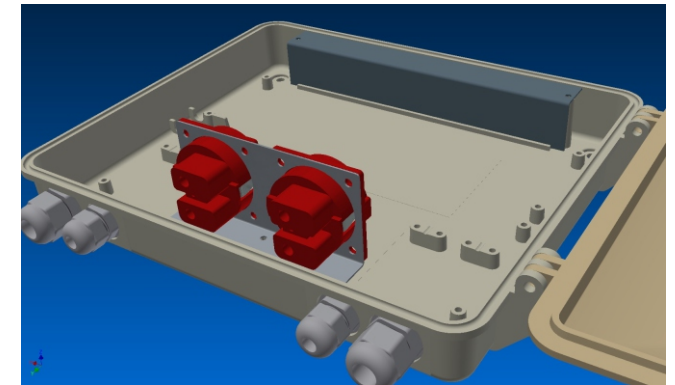
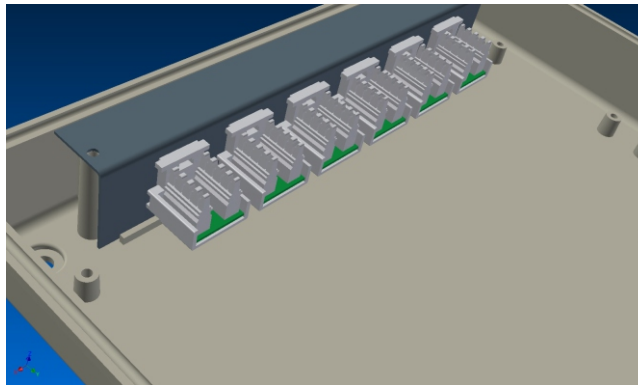
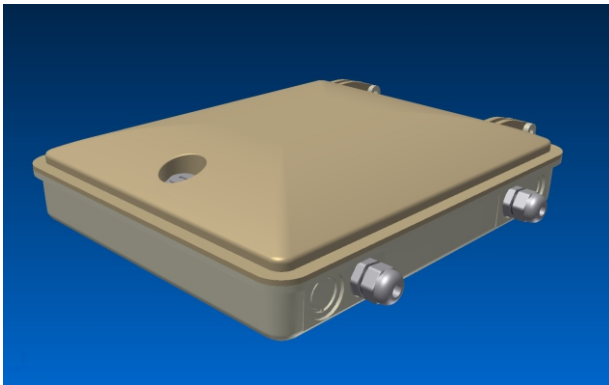
# Enclosure for various passive and active components

## FOS-54 : Highly customizable IP65 sealed enclosure



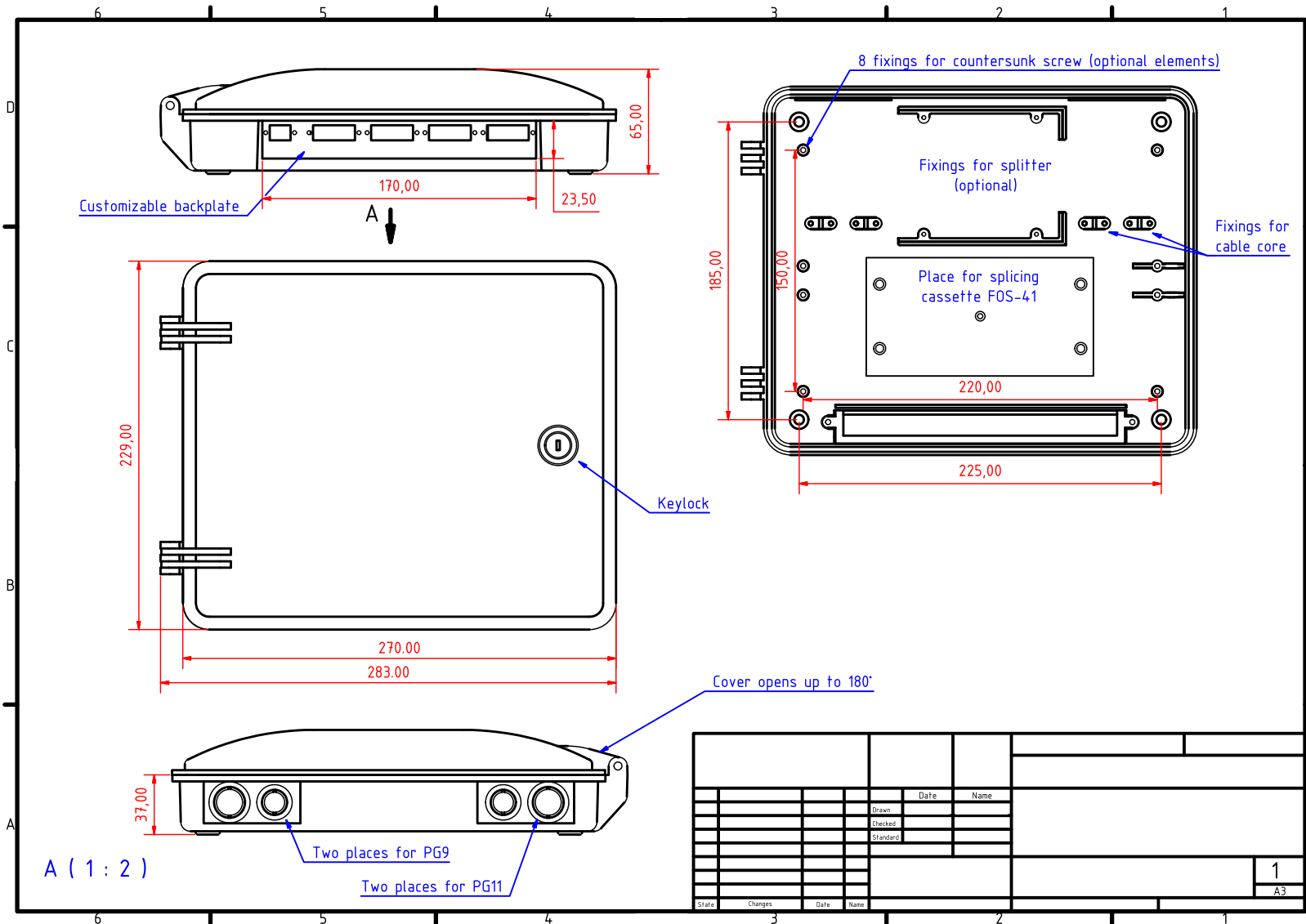
There is many customizable options ::

- Two sizes of base plates with custom configuration and DIN rails
- Specific back plate, can be cut for different sockets, switches or LEDs
- Internal fixings for active & passive components



# Enclosure for various passive and active components

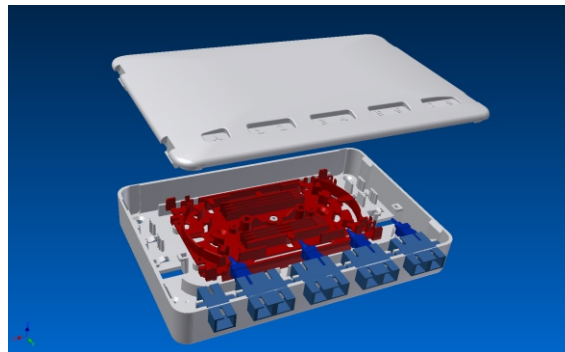
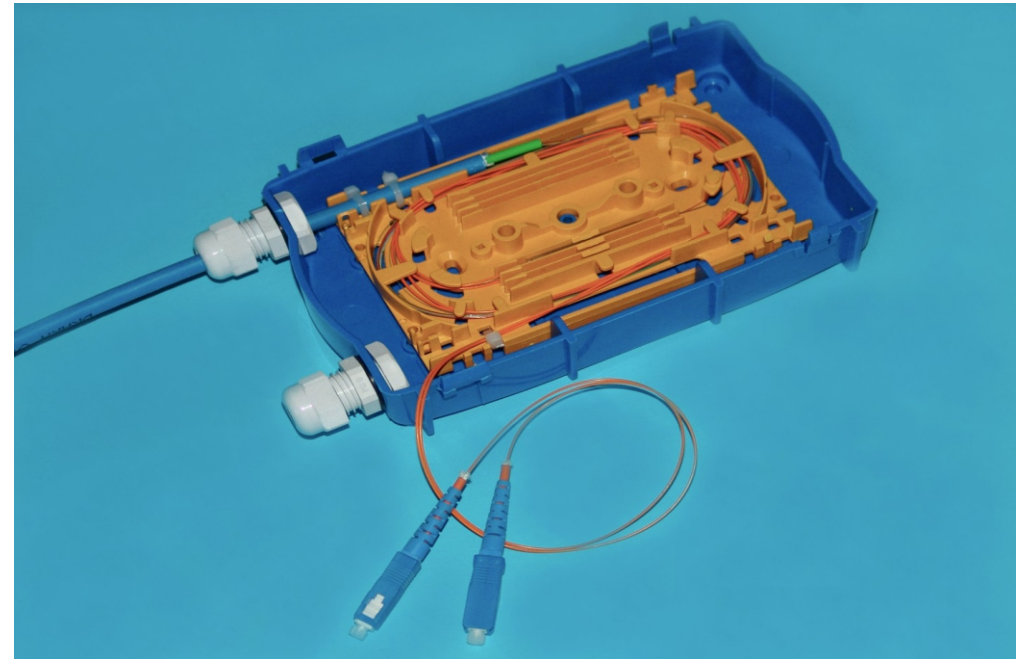
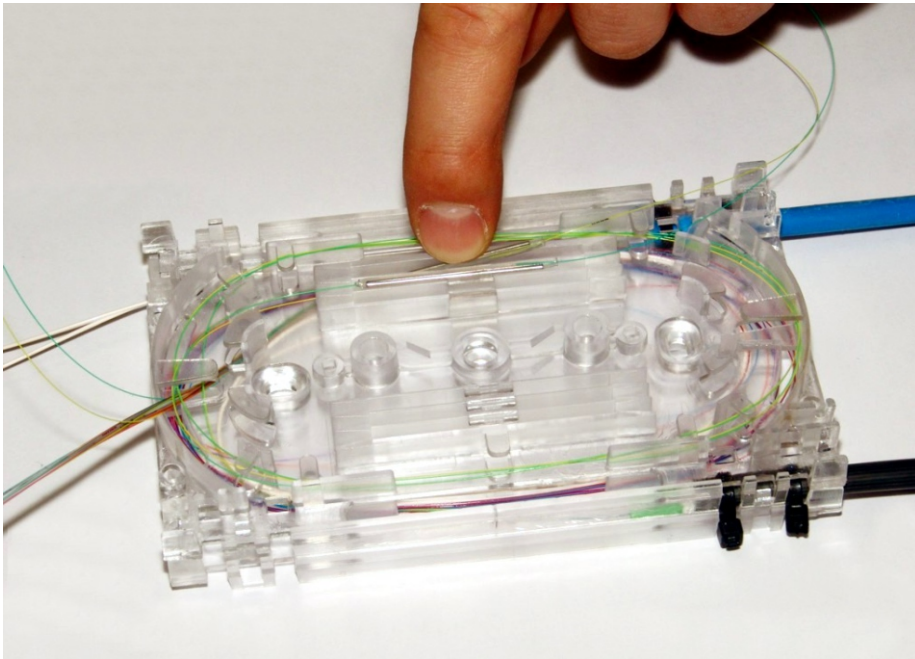
## FOS-54 : Highly customizable IP65 sealed enclosure





# Fiber optic splicing

## FOS-41 : Splicing cassette for various enclosures and applications



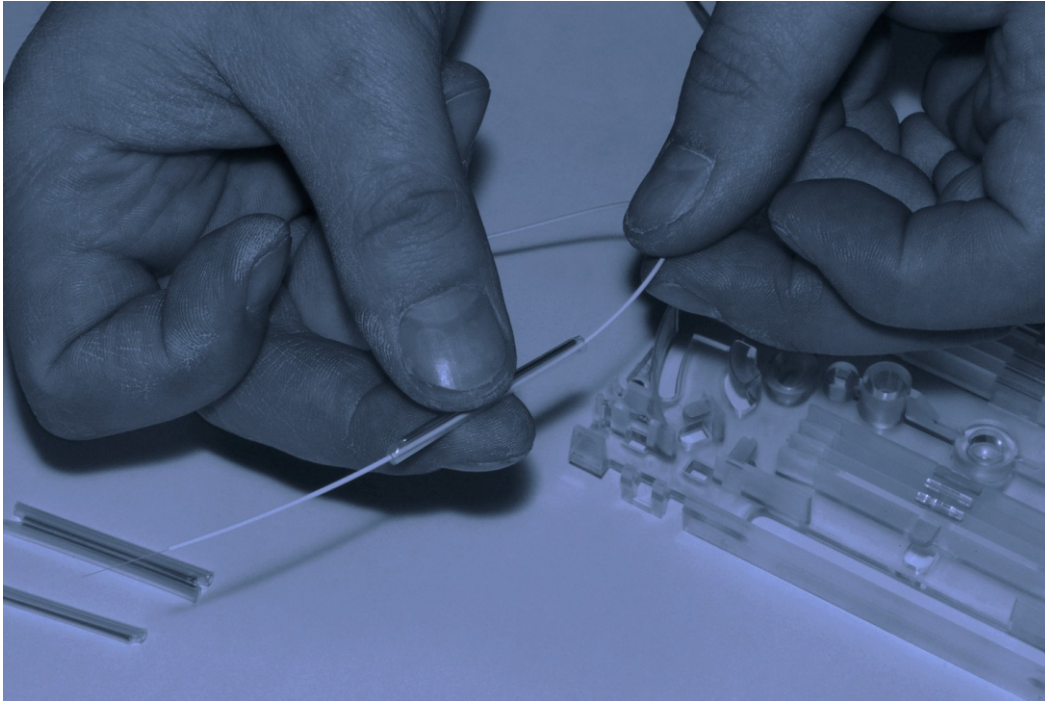
Some of our products use splicing cassette FOS-41 as key product to manage fiber splices.

- Indoor enclosure FOS-42
- Outdoor enclosure FOS-28
- Universal indoor enclosure FOS-56
- Medium-size enclosure FOS-54

# Many customizable options, especially for Your needs

---

Our products can be adapted and customized, corresponding Your requests



Most products includes possibilities to upgrade and adapt them specially to You.

We can't tell here about all of them, but if You need special solution, do not hesitate to ask us !

We are here to help !

We promise, that our response time will be the shortest !

Yours COMNET

