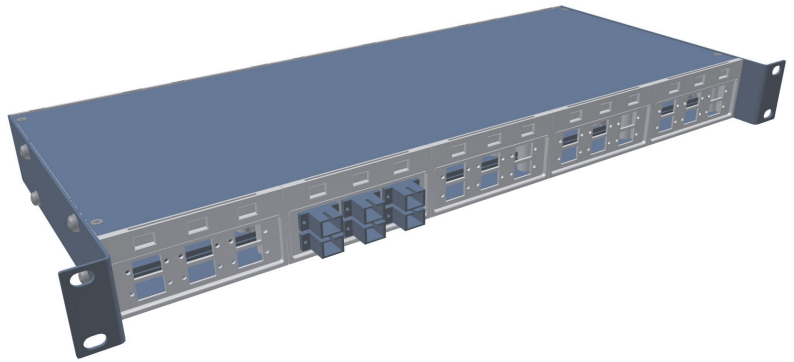


FOB-21

installation guide

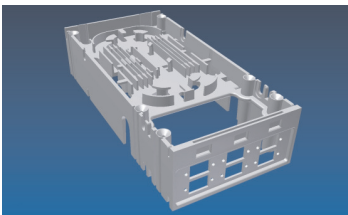
COMTECH



We congratulate you on purchasing our company's fiber-optical patch panel FOB-21!

FOB-21 is the new generation patch panel whose construction incorporates various revolutionary technical solutions. This patch-panel is produced from molten ABS plastic blocks which include all necessary optical cable termination elements for cable fastening and adapter mounting. These new technical solutions enable us to provide simple, highly integrated, multi functional 19-inch patch-panel with relatively low costs.

Like it is for all new and revolutionary products our offered patch-panel has its own specific installation terms. Most of them will be familiar to experienced system installation technician. However we advise you to carefully examine our installation guide step by step to ensure successful and qualitative installation.



Patch-panel FOB-21 is designed for 30 SC or LC connector installations. It is possible to supply each one of the five units with incoming cable with diameter up to 7mm using PG-9 type cable input, or with up to 12 mm thick cable using plastic strips.

All patch-panel units are connected together.

WARNING !

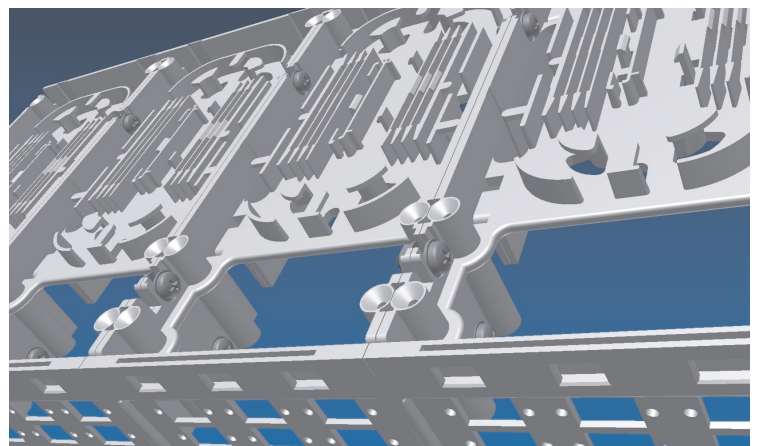


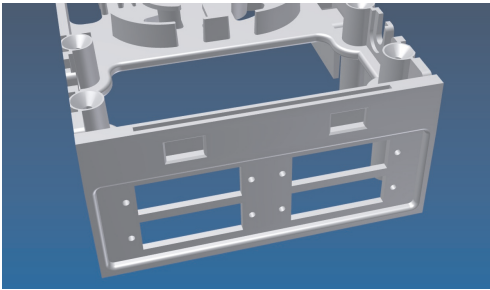
Our patch-panel is designed only for 40 mm long HSP (heat shrink protector) with 2.4 mm diameter in melted state!

Different size HSP may not be suitable for placing in cassettes !

There is an opening in each unit which allows incoming cable to be lead trough all units. Similar openings if required are possible to make in the patch-panel's backside.

In upper part of the panel optical welding cassettes are placed, which includes place for 12 weldings in each unit, altogether – 60 optical cable weldings in whole panel.





In nearest future we are planning to release patch-panel FOB-21 version which is designed for Duplex-SC adapter installation (4 Duplex-SC adapters in each unit, altogether 20 adapters,40 strands).

In addition we have unit in development where it will be possible to install FO converter.

If required patch-panel FOB-21 may be used for passive splitter installation.



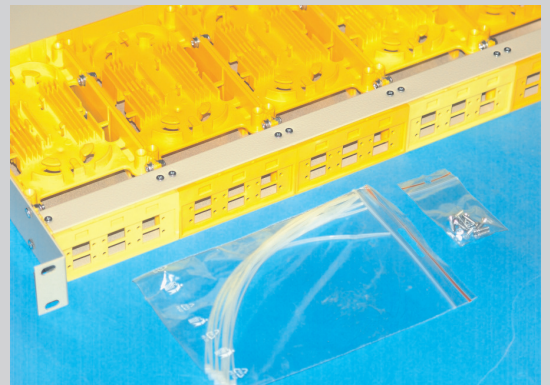
Our company continues to work on improving our products so there could be slightly difference between purchased product and that seen in the pictures.

Installing sequence

1

Unpack patch-panel and remove upper and lower metal covers.

Inside the panel you will find a bag with cover fastening screws and plastic strips.



2

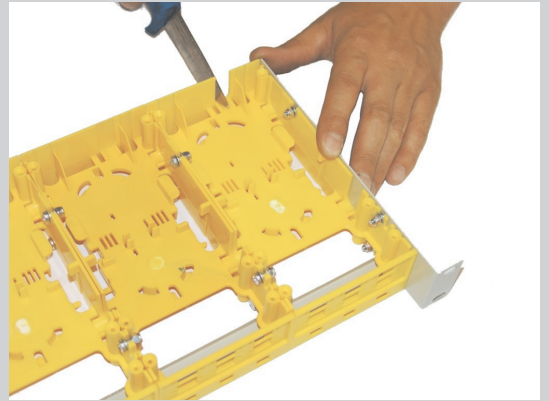
Clear off the cable of its outer isolation about in one meter length.

3

Chose the necessary cable input. Cables with up to 7mm in diameter we recommend to use PG-9 cable input (not included in the set), for thicker cables (up to 12mm) – using knife you have to cut out wider space in the back of the panel according to indicated lines. Cables can be inserted in any of the five units. If cable is only one, we recommend using one of the mentioned units.



Cable diameter 8-12 mm



Cable diameter 4-7 mm

4a

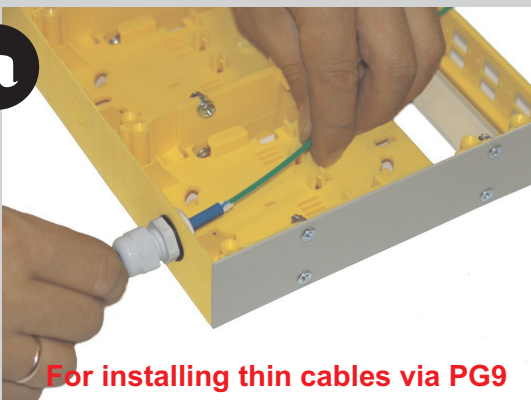
For installing thin cables via PG9

Insert PG-9 cable input in the opening and secure it with screw-nut.

4b

For installing thick cables via strips

If you are using thicker than 7mm cable, place it through previously cut opening so that inside the enclosure should be 30 cm long cable ending. Create cable bends to other units.

5a

For installing thin cables via PG9

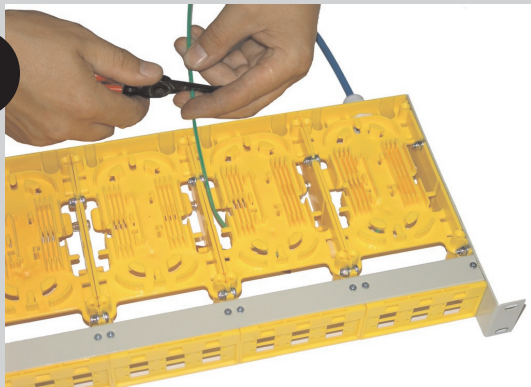
Pull cable trough PG-9 so that in the patch panel there should be 5 cm long cable outer isolation and pull tighter cable fastening screw-nut. If you are planning to convey incoming cable to another unit, leave a bit longer cable thread with uncleared cable isolation.

5b

For installing thick cables via strips

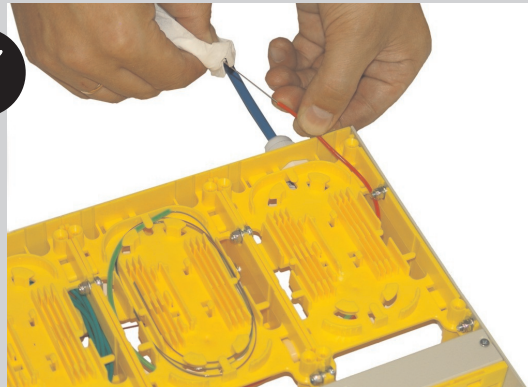
Fasten cable with plastic strips at the input and at juncture.

6



Clear about 30 cm in length cable isolation and carefully wipe off excess gel.

7



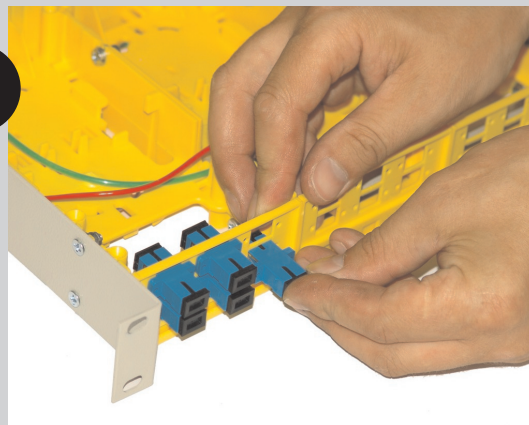
When incoming cable is fixed, using openings between units pull sectors till necessary unit, fasten it and pull sectors to panel's surface.

8



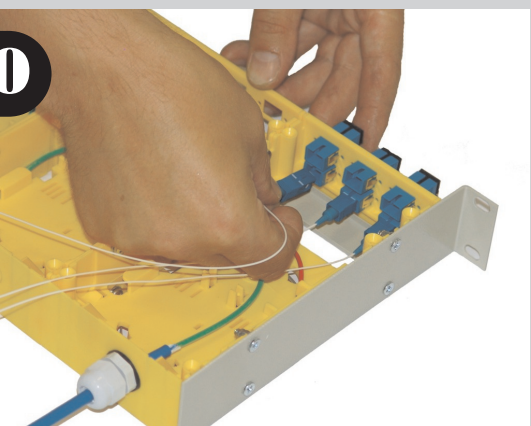
Cleared fiber must be placed inside the cassette in three circles.

9



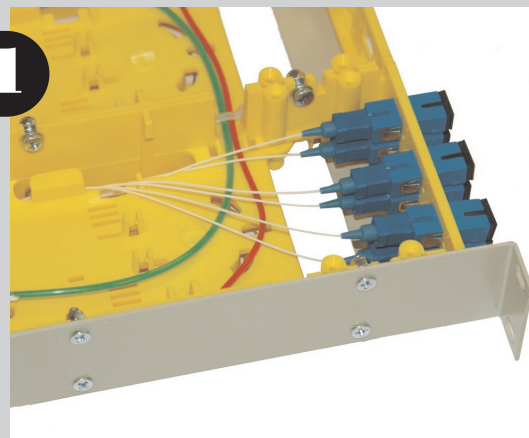
Insert adapters in front panel.

10



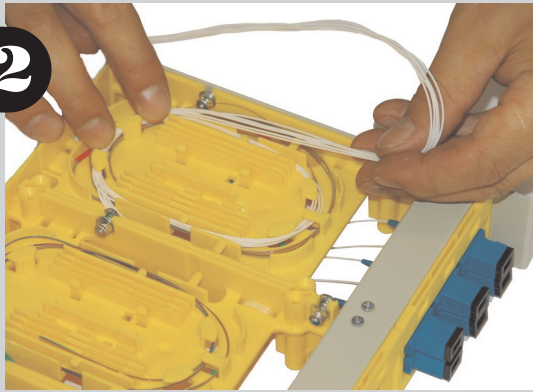
Insert connector pigtails into adapter. Pigtails should be previously cut 35-37 cm in length.

11



Pigtail ends should be lead onto panel's surface through designed openings.

12



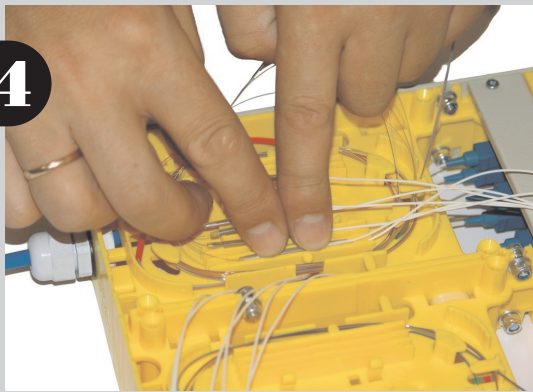
Verify pigtail length by wrapping it around the spool.

13



Weld pigtails to cable fibers according to welding device instructions. Use only 40 mm long HSP with 2.4 mm diameter in welded position!

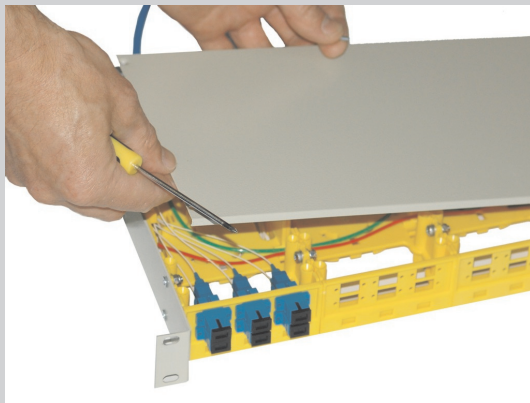
14



Carefully insert FSP into designed space. Two HSP can be placed in each space, one on onto another. Slightly pressing in the middle of HSP it should easily fixate into holder.

Do not in any case try to fixate FSP holding it by its ends!

15



When all units are assembled screw upper and lower cover to whole unit using screws from the plastic bag.



16

Place patch-panel into 19-inch enclosure or rack and fixate it with four screws. Panel take up 1U space.

We are certain that following these mounting regulations, you will be able to make secure and compact optical cable installations!

Yours COMTECH.